

# VOICES for Art

~ September 2011 ~

THE PUBLICATION OF THE SOUTHWEST MINNESOTA ARTS & HUMANITIES COUNCIL, INC.

## Public Art 101

Are you interested in having public art in your community? Are you wondering how to involve artists in public improvement projects? SMAHC, in partnership with Forecast Public Art, invites you to learn about the exciting field of public art and how you can get started with your own art projects. Forecast presenters will provide a step-by-step guided tour through the process of developing a public art project, connect you with resources as you explore possibilities, and provide inspiration to get your planning started! "Public Art 101: The What, Why, and How for Your Community" will be held on November 3 in Canby (details below).

Artists and their community partners are invited to attend a public art grantwriting workshop in Windom on September 29. Forecast's annual grant program provides artists the chance to develop and create projects for a public audience anywhere in the state.

The workshops are free of charge, but advance registration is strongly encouraged. Register by contacting the SMAHC office by phone (800) 622-5284, or online: [www.smahc.org](http://www.smahc.org)

### September 29: Public Art Grantwriting Workshop

Forecast Public Art Artist Grants  
3:00 - 5:00 PM  
Cottonwood County Historical Society  
812 4th Avenue, Windom

### November 3: Public Art 101

"The What, Why and How for your Community"  
3:00 - 5:00 PM  
PK Egans Family Restaurant - Back Room  
115 St. Olaf Avenue North, Canby



FORECAST Public Art is a St. Paul-based non-profit organization whose mission is to strengthen and advance the field of public art locally, nationally and internationally by expanding participation, supporting artists, informing audiences and assisting communities.

*This activity is funded, in part, by an appropriation from the Minnesota State Legislature with money from the State's general fund, and its arts and cultural heritage fund that was created by vote of the people of Minnesota on November 4, 2008.*



**Public Art in the SMAHC Region**  
*"Farm Family Portrait" (2010) by Doug Holtquist. Ortonville, MN.*

## Public Art Toolkit Now Online

The Public Art Toolkit was created by Forecast Public Art with primary funding by nine of the Regional Arts Councils of Minnesota (including SMAHC) and many others. With this great resource, you can:

- Get information on topics like artist selection, location analysis, funding, and permits.
- Read articles that consider the question, "What is public art?"
- View sample calls for artists, contracts, and budget worksheets.
- Learn about your fellow Minnesotans' experiences with public art projects through case studies and a project gallery.
- Discover state and regional public art resources.

[www.forecastpublicart.org/toolkit](http://www.forecastpublicart.org/toolkit)



*SMAHC  
Annual Celebration*

TURN TO PAGE 4!

### ***In This Issue...***

<b><i>Opportunities</i></b> .....	<b>2</b>
<b><i>Calendar Events</i></b> .....	<b>2-3</b>
<b><i>SMAHC Annual Celebration</i></b> .....	<b>4</b>
<b><i>Galleries</i></b> .....	<b>4-5</b>
<b><i>SMAHC Grant Dates</i></b> .....	<b>5</b>

## OPPORTUNITIES

**National Cherry Blossom Festival.** Senator Franken's office is looking for at least one instrumental and one vocal ensemble to represent Minnesota at the National Cherry Blossom Festival in Washington, D.C. March 20 - April 27, 2012. The festival honors the friendship between the United States and Japan, and all 50 states are to be represented. Ensembles will perform at least 2-3 times during a 3-4 day period. If interested, contact Katherine Blauvelt in Senator Franken's Saint Paul office before September 8 at [katherine\\_blauvelt@franken.senate.gov](mailto:katherine_blauvelt@franken.senate.gov)

**Holdingsford Mill Art Project.** The City of Holdingsford is accepting letters of interest from area artists who would be willing to work in partnership with the community to create a public art piece at the Holdingsford Mill, adjacent to the Lake Wobegon Trail and one block west of Main Street. Details and requirements for applying to this call are available at <http://holdingsfordmn.us> Submission deadline September 14, 2011.

**MN Center for Book Arts/Jerome Book Arts Fellowships.** This fellowship program is open to emerging artists of all disciplines interested in exploring the book form. Recipients will receive project funding up to \$5,000, studio and equipment use, artistic support from MCBA staff and artists, and a one-year MCBA membership. Application deadline is September 16, 2011. Application forms and more information at [www.mnbookarts.org/jerome](http://www.mnbookarts.org/jerome)

**Chief Bemidji Statue Project.** The City of Bemidji, working with the Parks and Trails Commission and its Chief Bemidji Statue Project sub-committee, wishes to commission an artist, or artist team, to design, fabricate and install a new sculpture of Chief Bemidji near the west shore of Lake Bemidji. The RFQ can be viewed on the City of Bemidji home page at: [www.ci.bemidji.mn.us](http://www.ci.bemidji.mn.us). The submission deadline is September 19, 2011.

## SEPTEMBER CALENDAR

**\*\* Indicates the project was funded in part with a grant from the SMAHC with funds provided by the McKnight Foundation, the MN State Legislature, or the MN Arts & Cultural Heritage Fund as appropriated by the MN State Legislature with money from the vote of the people of Minnesota on 11/4/08.**

**\*\*September 1 SMAHC ARTS ORGANIZATION DEVELOPMENT Grant Program DEADLINE!** All applications must be delivered to the SMAHC office or postmarked by 4:30 PM September 1!

**\*\*September 8 SMAHC Grantwriting Workshop** on the Arts in the Schools (formerly Arts & Learning) grant programs. Held at the SMAHC office, 1210 E. College Dr., Suite 600, **Marshall** from 4 - 6:00 PM. Register by calling 800-622-5284 or 507-537-1471.

**September 7-10 Midwest Arts Conference** at the **Minneapolis** Convention Center. For information, go online: [www.artsmidwest.org/programs/mac](http://www.artsmidwest.org/programs/mac) or email: [midwestartsconference@artsmidwest.org](mailto:midwestartsconference@artsmidwest.org)

**September 9-11 Tatanka Arts and Redwood County Historical Society Art Show**, at the Redwood County Historical Museum Schoolhouse, Hwy. 19 West, **Redwood Falls**. Noon - 4:00pm.

**\*\*September 10 Scarecrow Festival** with sculpture/art display and sale, downtown **Morton**.

**\*\*September 14-17 & 21-24 "A Trip to Bountiful"**, a timeless drama, performed at The Barn Theatre, 321 SW 4th St., **Willmar**. Box Office hours: 9 AM - 4 PM weekdays. Call to reserve seats: 320-235-9500 or online: [www.thebarntheatre.com](http://www.thebarntheatre.com)

**September 15 Poetry Reading by Susan McLean**, a Lunch Bunch presentation at the Marshall Area Fine Arts Council (MAFAC), 109 N. 3rd St, **Marshall**. 12-1 PM.

**\*\*September 17 SMAHC Panel Meeting** on the Art Projects and Arts Organization Development grant applications. Held at the SMAHC office, 1210 E. College Dr., Suite 600, **Marshall**. 9:00 AM.

**\*\*September 17 Celebrate Art! Celebrate Coffee!** Art festival, music and dance performances, and hands-on activities and demonstrations. Becker Ave & 6th Street, **Willmar**, 9 AM - 4 PM.

**\*\*September 17 -18 "Crafting Memoir From Memory" workshop** presented by Dr. Maureen Murdock, a best-selling author and lecturer whose books have been published in 12 different languages. This workshop, held at the High School Auditorium in **Ortonville**, will address memoir writing and is appropriate for all levels of writing experience. Sponsored by the Big Stone Arts Council. \$65 Adult; \$40 students up to 21 years of age. Registration required: [www.bigstonearts.com](http://www.bigstonearts.com)

**\*\*September 22 SMAHC Grantwriting Workshop** on the Arts in the Schools (formerly Arts & Learning) grant programs. Held at 1111 5th Ave. Worthington from 7 to 9:00 PM. Register by calling 800-622-5284 or 507-537-1471.

**\*\*September 23 Mural Unveiling**, Rock County Fine Arts Association, East Main Street, **Luverne**.

**September 27 SMAHC Board Meeting** at the SMAHC Office, 1210 E. College Drive, **Marshall**. 7 PM.

**\*\*September 29 FORECAST Public Art Grant Workshop** sponsored by SMAHC and held at the Cottonwood County Historical Center in **Windom**. Learn all about this public art grant program that provides artists the chance to develop and create projects for a public audience anywhere in the state. Register by calling the SMAHC office at 800-622-5284.

**September 30, October 1-2, 7-9 "The Dixie Swim Club"** fall play performed at the **Lake Benton** Opera House. Shows at 7:30 PM except for matinees at 2 PM. Tickets: \$10 Adult, \$9.50 Student/Senior. For tickets, call 507-368-4620 or email: [lakebentonoperahouse@gmail.com](mailto:lakebentonoperahouse@gmail.com)

**\*\*September 30 - October 2 Meander 2011:** Upper MN River Art Crawl. Information at [www.artsmeander.com](http://www.artsmeander.com)

**OCTOBER CALENDAR**

**\*\*October 5 Metales M5 Mexican Brass** (MAFAC Performance Series) at the Schwan Community Center for the Performing Arts, **Marshall**. 7:30 pm. More information at [www.mafac.net](http://www.mafac.net), or call 507-532-5463.

**\*\*October 28 VocalEssence Ensemble Singers** (MAFAC Performance Series) at the Schwan Community Center for the Performing Arts, **Marshall**. 7:30 pm. More information at [www.mafac.net](http://www.mafac.net), or call 507-532-5463.

**\*\*October 29 Vocal Essence Concert** at the Palace Theatre, 104 E Main St, **Luverne**. 8:00 pm.

**\*\*October 29 SMAHC Annual Celebration of Art & Artists** This "Star Studded Gala" promises to be a fun evening to network with artists and celebrate their accomplishments. Held this year at Jackpot Junction in **Morton**. Tickets \$30/person include dinner. Send ticket request to SMAHC office: 1210 E College Drive, Suite 600, Marshall, MN 56258. Or call for more info: 800-622-5284 or 507-537-1471.

**\*\*October 30 Buffalo Ridge Chorale Concert:** Celebration of Peace & Unity, at St. John Cantius Church, **Wilno**.

**[www.smahc.org](http://www.smahc.org)**

Grant guidelines, grant applications, arts calendar, news and contact info

2011 *Meander*  
Upper Minnesota River Art Crawl

**Friday,  
Sept. 30  
2:00-6:00 pm**

**Saturday,  
Oct. 1  
9:00 am-6:00 pm**

**Sunday,  
Oct. 2  
9:00 am-4:00 pm**

painting | photography | jewelry | fiber arts  
pottery | sculpture | mixed media & more

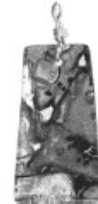
*Visit 33 studios featuring 45 prairie artisans!*



"What goes around - comes around" by 2011 Featured Artist Kerry Kolke-Bonk



Rob Rakow



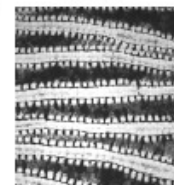
Barb Ash



Brad Hall



Curt & Paula Soine



Martha Alvarado



Celeste Suter

Special Events happening throughout Meander! Kick off celebration in Granite Falls, Jazz with Nancy Harms at Memorial Auditorium in Dawson, and more. See our website for more details!

**[www.artsmeander.com](http://www.artsmeander.com)**

**1-866-866-5432**

 Find us on Facebook

SOUTHWEST MINNESOTA ARTS & HUMANITIES COUNCIL

*A Celebration of Art & Artists*

"STAR STUDDED GALA"

*Come dressed as your favorite art star!*

**SATURDAY  
OCTOBER 29**

Jackpot Junction  
Morton, MN  
5:30-10PM  
Silent & Live Auctions  
Prairie Disciple Award  
Dinner  
Annual Meeting  
Entertainment

Tickets  
**\$30**

STAYING OVER?  
Ask for 'SMAHC' rate when  
booking hotel rooms.  
[www.jackpotjunction.com](http://www.jackpotjunction.com)

For more info, call SMAHC at 800-622-5284

BETTE SAYS: *"See you there, darling!"*

## Galleries

**SMAHC Art Gallery.** Kathleen Kusz & Tricia Mickle's exhibit "A Bird Conversation" continues in September. A new exhibit of Cat Abbot's farm life themed oil paintings opens October 10. Visit the gallery Monday through Friday from 8 AM to 4:30 PM at 1210 E College Dr., **Marshall**. Enter through the glass door on the east side of the building.

**ARTmeyerson**, 105 4<sup>th</sup> St. N., **Atwater**. To schedule an appointment, call Sue Meyerson at 320-220-0970 or 320-974-3609.

**Barn Theatre Art Gallery**, 321 4th St. SW, **Willmar**. September exhibit features Janet Olney's basket weaving. Monday through Friday, 9 AM to 4 PM. For more information, call 320-235-9500 or email [info@thebarntheater.com](mailto:info@thebarntheater.com).

**Carnegie Cultural Center**, 205 N. Freeman, **Luverne**. September's exhibit will be watercolors by Charlotte Laxen. Hours are Tues – Fri, Noon - 5 PM and Sat 1 - 4 PM. For more info, email [marypet@iw.net](mailto:marypet@iw.net) or call 507-283-8294.

**Clay Coyote Pottery**, 17614 240th St. **Hutchinson**. Hours are Mon - Sat 10 - 5 PM; Sunday Noon - 4 PM. You can always call ahead for an appointment. Check out [www.claycoyote.com](http://www.claycoyote.com) or email Betsy & Tom at [claypot@hutchtel.net](mailto:claypot@hutchtel.net)

**Hutchinson Center for the Arts**, 28 North Main Street, **Hutchinson**. October's exhibit is a fall-themed juried art show. More info: 320-587-0899, [info@crowriverarts.org](mailto:info@crowriverarts.org).

**Kaleidoscope - An Artists' Gallery**, 326 Main Street South, **New London**. Located in the Banner Oak Pottery Building. Hours: 10 - 5 PM Mon - Sat.

**Marshall Area Fine Arts Council (MAFAC)**, 109 N. 3rd Street, **Marshall**. August 2 - September 9: Robert Schwan Memorial Photography Contest on themes of "Silhouette" and "Frame It!" September 13 - October 21: Bill Gossman, pottery. Hours: Tues - Fri Noon - 5:30 PM. Evenings and Saturdays by appointment. 507-532-5463. Visit [www.mafac.net](http://www.mafac.net) for more information.

**Milan Village Arts School** in **Milan**. Os Style Rosemaling class is offered in October. No classes are scheduled for September. To view all the classes offered throughout the year, visit their website at [www.milanvasartsschool.org/](http://www.milanvasartsschool.org/)

**Nobles County Art Center**, 407 12th Street, **Worthington**. The September exhibit is a retrospective of Mildred Goddard. In October, Jerry and Julie Punt show their pottery. Hours: M-F 2 - 4:30 PM. Call 507-372-8245 for more information.

**Potato Eaters Gallery**, 330 Litchfield Ave SW, **Willmar**. "Bill Bjostad Talks Art" on Saturday mornings from 10 AM - 12. Sit around the gallery, drink coffee and talk about art. New topic every Saturday.

**Robert Remick Gallery/Cottonwood County Historical Society**, 812 Fourth Avenue, **Windom**. "HAVE YOU SEEN ART?" exhibit featuring 12 Cottonwood county artists. Exhibit runs May 1 - Sept 3. Gallery Hours: Mon - Fri 8 - 4 PM & Sat 10 - 4 PM. For more info, call 507-831-1134 or email [cchs@windomnet.com](mailto:cchs@windomnet.com)

**Tokheim Pottery**, 2057 361st Ave, **Dawson**. Visit [www.tokheim-stoneware.com](http://www.tokheim-stoneware.com) For more info about the gallery or call 320-769-2142 or email [info@tokheim-stoneware.com](mailto:info@tokheim-stoneware.com)

**William Whipple Gallery** in Bellows Academic 291 at Southwest Minnesota State University, **Marshall**. The current exhibit of Robert Dorlac's Upernavik Landscapes runs from August 15 to September 22. Hours: Monday through Thursday 8 AM - 11 PM. Friday 8 AM - 5 PM. Sunday 2 - 11 PM. Closed Saturdays and Holidays.

**Willmar Area Arts Council Gallery** at WEAC building (Willmar Education and Arts Center), 611 Fifth St. SW, **Willmar**. September exhibit: Works by Laura Welle. October exhibit: Photographs by Connie Wanner.

## SMAHC Grant Dates

Art Projects	
Planning Grant Deadlines	The 1st of each month
Round II Deadline	January 13, 2012
Round II Earliest Start Date	March 9, 2012
Round III Deadline	May 15, 2012
Round III Earliest Start Date	July 1, 2012

Arts Organization Development	
Round I Deadline	September 1, 2011
Round I Earliest Start Date	October 15, 2011
Round II Deadline	February 1, 2012
Round II Earliest Start Date	March 9, 2012

Arts in the Schools	
Round I Deadline	October 15, 2011
Round I Earliest Start Date	December 1, 2011
Round II Deadline	April 15, 2012
Round II Earliest Start Date	June 1, 2012

Individual Artists: Established Career and Development	
Deadline	December 15, 2011
Earliest Start Date	February 1, 2012

Art Study Opportunity for Youth	
Deadline	March 1, 2012
Earliest Start Date	April 15, 2012

Prairie Star and Prairie Disciple Awards	
Deadline	March 1, 2012

Applications and more information are available on our website: [www.smahc.org](http://www.smahc.org)



*SMAHC grant awards are made possible with funds appropriated by the State Legislature and/or by the Minnesota Arts and Cultural Heritage Fund as appropriated by the Minnesota State Legislature with money from the vote of the people of Minnesota on November 4, 2008.*



SW MN Arts & Humanities Council  
 1210 E. College Drive, Suite 600  
 Marshall, MN 56258  
 Phone 507-537-1471 or 800-622-5284 toll free  
 www.smahc.org smahcinfo@iw.net

NON-PROFIT  
 ORGANIZATION  
 U.S. POSTAGE  
 PAID  
 MARSHALL, MN  
 PERMIT NO. 140

**Address Service Requested**

**Has your membership expired?** If your address label shows that your membership has expired this may be the last issue of **VOICES** you will receive in the mail. Please use the form at the bottom of this page to **renew your membership now**. If you prefer to receive **VOICES** via email, subscribe at [www.smahc.org](http://www.smahc.org) or contact the SMAHC office.

**Membership & Donations, July 16—August 24:** Friends of the Library, Benson • City of Graceville • Barbara Olson, Hendricks • Helen & Douglas Devereaux, Marshall • Marilyn Leach, Marshall • Jack & Elaine Gable, Ortonville • Redwood County Commission, Redwood Falls • Marco Business Products, St. Cloud • Ken & Marlys Knuth, Slayton • Leroy & Jan Ann Peterson, Slayton • Marge Robinson, Tracy • Kandiyohi Cty Commission, Willmar • Friends of the Library, Windom • Buffalo Billfolds/The Cows Outside, Worthington • First State Bank Southwest, Worthington • Hy Vee, Worthington • The Meadows, Worthington • Newport Laboratories, Inc., Worthington • Worthington Public Schools • Carmen Fish, Worthington

**2011 BOARD OF DIRECTORS**

Big Stone.....	..... Deb Larson	Lincoln .....	..... Open	Pipestone .....	..... Open
Chippewa.....	..... Jane Link	Lyon.....	..... Paula Nemes	Redwood.....	..... Dan Wahl
Cottonwood .....	..... Marilee Strom	McLeod.....	..... Kurt Schulz	Renville .....	..... Tamara Isfeld
Jackson.....	..... Paul Grupe	Meeker .....	..... Susan Marco	Rock.....	..... Cindy Reverts
Kandiyohi .....	..... Connie Feig	Murray.....	..... Kelly Muldoon	Swift.....	..... Sydney Masee
Lac qui Parle .....	..... Open	Nobles .....	..... Ellen Copperud	Yellow Medicine.....	..... Patricia Enger

**STAFF**

**Executive Director**.....Greta Murray      **Administrative Assistant, Newsletter Editor**.....Caroline Koska  
**Program Assistant**.....Nicole DeBoer      **Office Assistant**.....Helene Devereaux

**SMAHC Membership Form**

**Join SMAHC today and have your money doubled! The McKnight Foundation will match dollar-for-dollar any new or increased donations to SMAHC! Help us earn our match.**

Contributions are tax-deductible. Mail your membership donation to **SMAHC, 1210 East College Drive, Suite 600, Marshall, MN 56258.**

Name/Organization \_\_\_\_\_  
 Address \_\_\_\_\_ City \_\_\_\_\_ State \_\_\_\_\_ Zip \_\_\_\_\_  
 Telephone \_\_\_\_\_ E-mail \_\_\_\_\_ County \_\_\_\_\_

**LEVELS OF PARTNERSHIPS:**      \$500.00 + Benefactor      \$99.00 - \$50.00 Supporter  
    \$499.00 - \$250.00 Patron      \$49.00 - \$ 25.00 Contributor  
    \$249.00 - \$100.00 Sustainer      Business & Organizational memberships starting at \$50.00

*Please consider making a gift to SMAHC as a memorial or in honor of a birthday, anniversary or other special occasion.*